



Setup guide for Mac OS X Leopard 10.5-6

eduroam (**education roaming**) is a secure, world-wide roaming access service that allows university staff and students wireless internet access at participating national and international eduroam campuses. For more information on the eduroam service visit www.it.unsw.edu.au/staff/eduroam. Use these instructions for setting up and testing your connection to eduroam on campus or connecting to eduroam at a remote campus location.

System requirements & prerequisites

- To access eduroam, you will need a properly configured 802.11a/b/g/n (WiFi) compatible laptop computer or mobile device that supports WPA2 Enterprise wireless security. Leopard and Snow Leopard Macs have built-in AirPort that supports the above requirements.

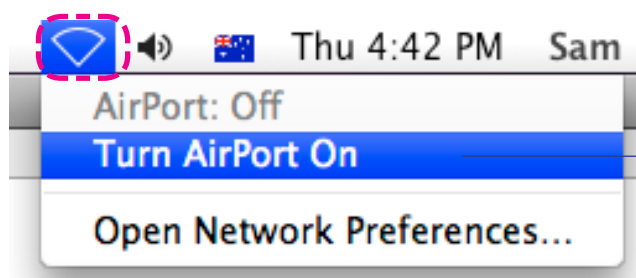


You need to be on campus near a UniWide wireless hotspot such as a library, computer lab or common area to configure your computer for eduroam. To access eduroam

on another campus, look for the eduroam logo or the local university's wireless service symbol as eduroam uses local wireless infrastructure.

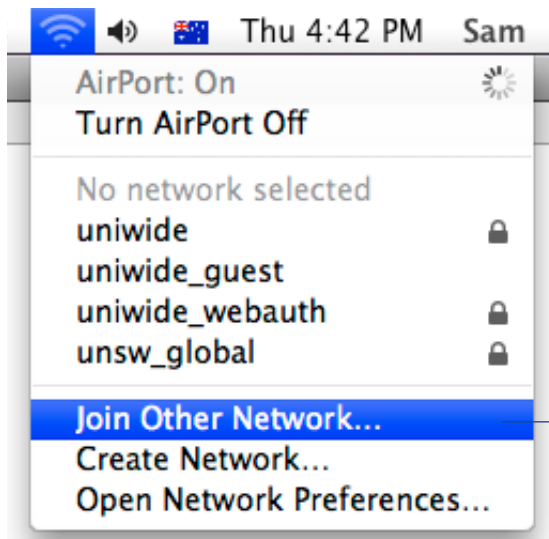


Step 1 - Activate AirPort wireless

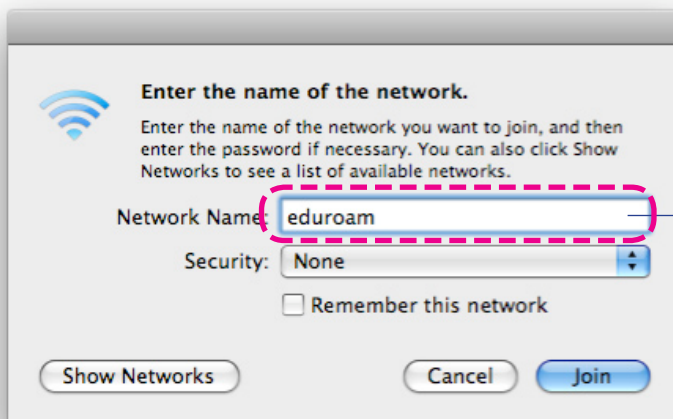


1. Click the **AirPort** icon in the top right of your Mac screen
2. Select **Turn AirPort On**

Step 2 - Configure for eduroam



3. Select **Join Other Network...**



4. Enter **eduroam** (lowercase) in the Network Name field



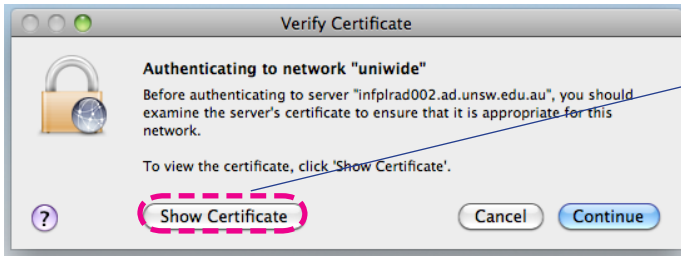
5. Select **WPA Enterprise**

• Enter your **z number** followed by **@unsw.edu.au** in the **Username** field (as in: z1234567@unsw.edu.au)

6. Enter your **zPass** in the Password field

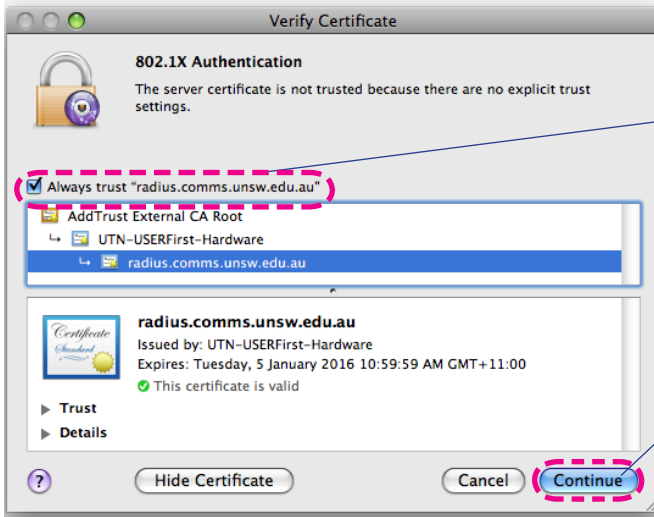
7. Tick Remember this network

8. Click **Join**



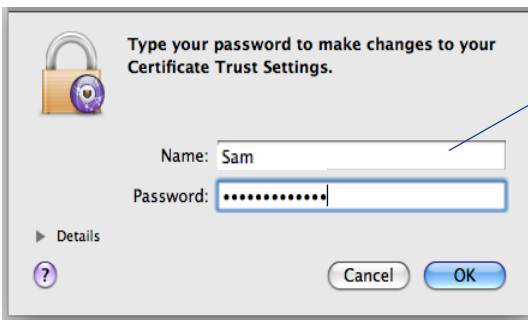
9. Click **Show Certificate**

If you have already set up your laptop for UniWide, this certificate prompt may not appear



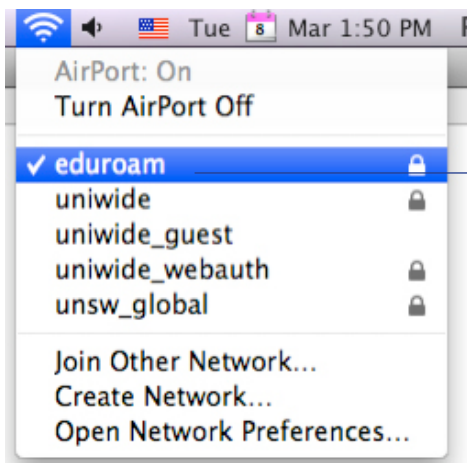
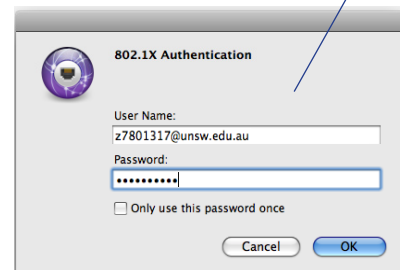
10. Ensure the checkbox **Always trust: radius.comms.unsw.edu.au** is ticked

11. Click **Continue**



12. Enter your **Mac admin** username and password then click **OK**

You may be asked to authenticate at this point; as your username enter your z number followed by @unsw.edu.au, for your password enter your zPass



You will then see **eduroam** selected in the AirPort wireless list. You are now connected to eduroam.

NOTE: After setup you may be prompted to enter your zPass again when you next restart your Mac. This will only happen once.

If you change your zPass in the future - you will be prompted to re-enter it the next time you attempt to connect to eduroam

If you have any issues or questions, please contact the IT Service Centre at itservicecentre@unsw.edu.au