



Setup guide for Mac OS X Tiger 10.4



You need to be on campus near a UniWide wireless hotspot such as a library, computer lab or common area to configure your computer for eduroam. To access eduroam on another campus, look for the eduroam logo or the local university's wireless service symbol as eduroam uses local wireless infrastructure.



System requirements & prerequisites

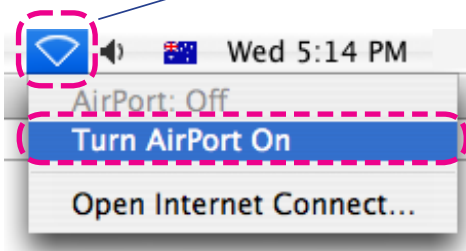
- To access eduroam, you will need a properly configured 802.11 a/b/g/n (WiFi) compatible laptop computer or mobile device that supports WPA2 Enterprise wireless security. Most Macs manufactured in the last few years have built-in WiFi compatible wireless, branded as *AirPort*.

Index

1. Activate AirPort wireless [page 1]
2. Configure and connect to eduroam [page 2]

Step 1 - Activate AirPort wireless

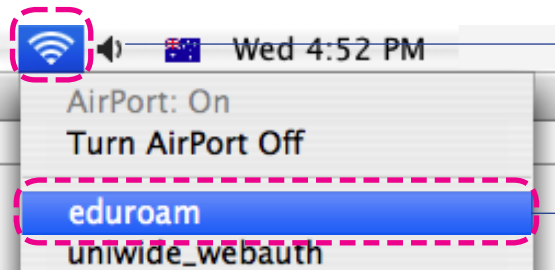
1. Click the **AirPort** icon in the top right of your Mac screen



2. Select **Turn AirPort On**

Continued over...

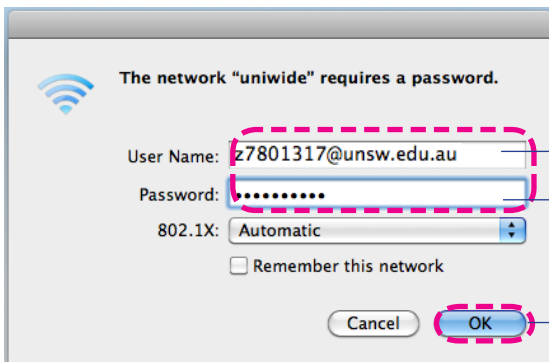
Step 2 - Configure and connect to eduroam



3. Click the **AirPort** icon again

4. Select **eduroam**

An AirPort login window appears



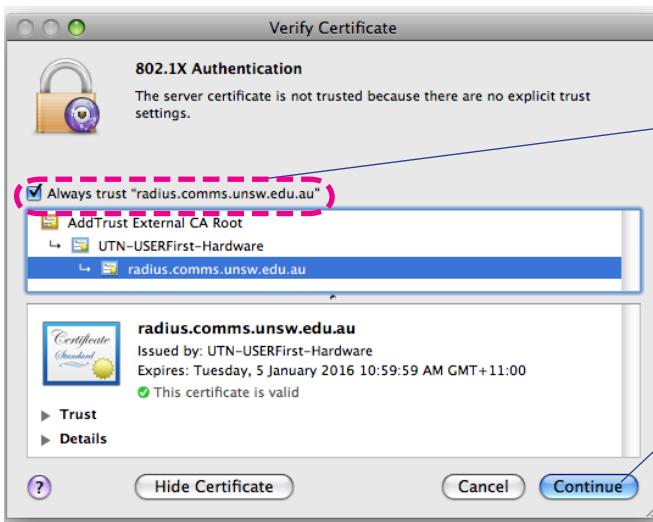
5. Enter the following;

- your **z number** followed by **@unsw.edu.au** in the **Username** field (as in: z1234567@unsw.edu.au)
- your **zPass** in the **Password** field

6. Click **OK**



7. Click **Show Certificate** icon



8. Ensure the checkbox **Always trust: radius.comms.unsw.edu.au** is ticked

9. Click **Continue**

10. You will then be prompted to enter your **Mac admin** username and password to accept the changes to the AirPort configuration

If you change your zPass in the future - you will be prompted to re-enter it the next time you attempt to connect to eduroam

If you have any issues or questions, please contact the IT Service Centre at itservicecentre@unsw.edu.au