

Setup guide for Mac OS X Tiger 10.4

UniWide is the UNSW Campus Wireless Network for UNSW students and staff. It offers fast, secure wireless network connectivity from a wide range of locations across UNSW's campuses. Wireless access is available to all current staff and students. UniWide can be accessed via any WiFi-enabled laptop or mobile device that supports WPA2 Enterprise wireless security.

System requirements & prerequisites

- To access UniWide, you will need a properly configured 802.11a/b/g/n (WiFi) compatible laptop computer or mobile device that supports WPA2 Enterprise wireless security. Most Macs manufactured in the last few years have built-in WiFi compatible wireless, branded as *AirPort*.

Index

1. Activate AirPort wireless [page 1]
2. Configure and connect to UniWide [page 2]

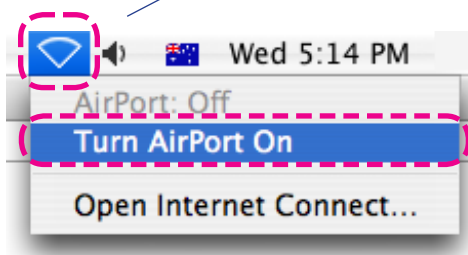
IMPORTANT CHANGES IN 2010

- you now need to use your zPass to log into UniWide
- you can no longer use UniPass
- you will need to accept a new certificate (step 2.8)

For more information about zPass, please visit www.it.unsw.edu.au/students/zpass/

Step 1 - Activate AirPort wireless

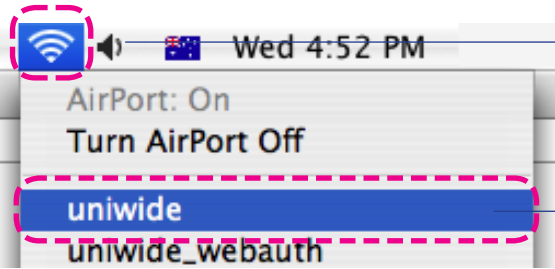
1. Click the **AirPort** icon in the top right of your Mac screen



2. Select **Turn AirPort On**

Continued over...

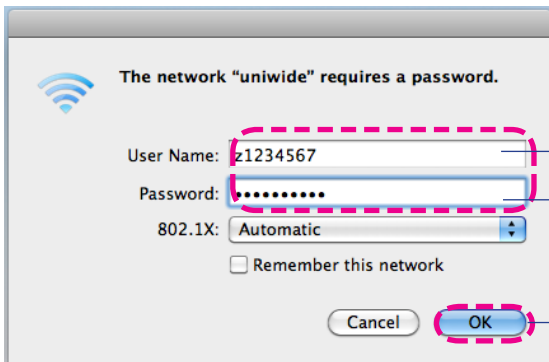
Step 2 - Configure and connect to UniWide



3. Click the **AirPort** icon again

4. Select **uniwide**

An AirPort login window appears



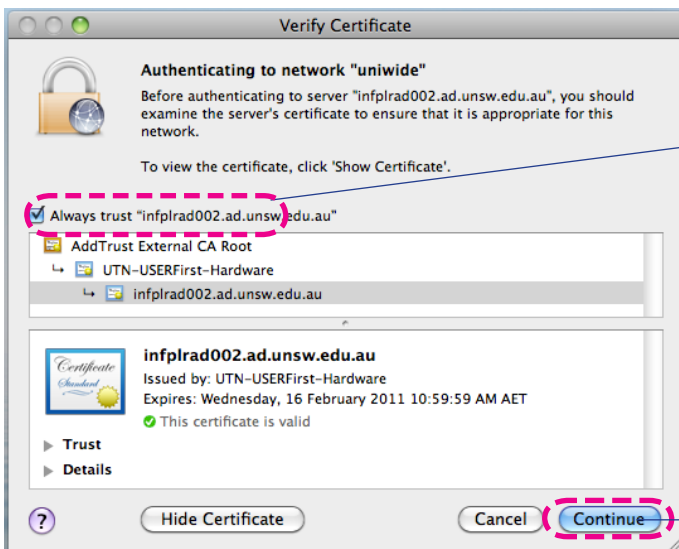
5. Enter the following;

- your **zNumber** in the **Username** field
- your **zPass** in the **Password** field

6. Click **Ok**



7. Click **Show Certificate** icon



8. Ensure the check box **Always trust these certificates** is ticked

9. Click **Continue**

10. You will then be prompted to enter your **Mac admin** username and password to accept the changes to the AirPort configuration

You should now be connected to the UniWide wireless network

If you have any issues or questions, please contact the IT Service Centre at itservicecentre@unsw.edu.au